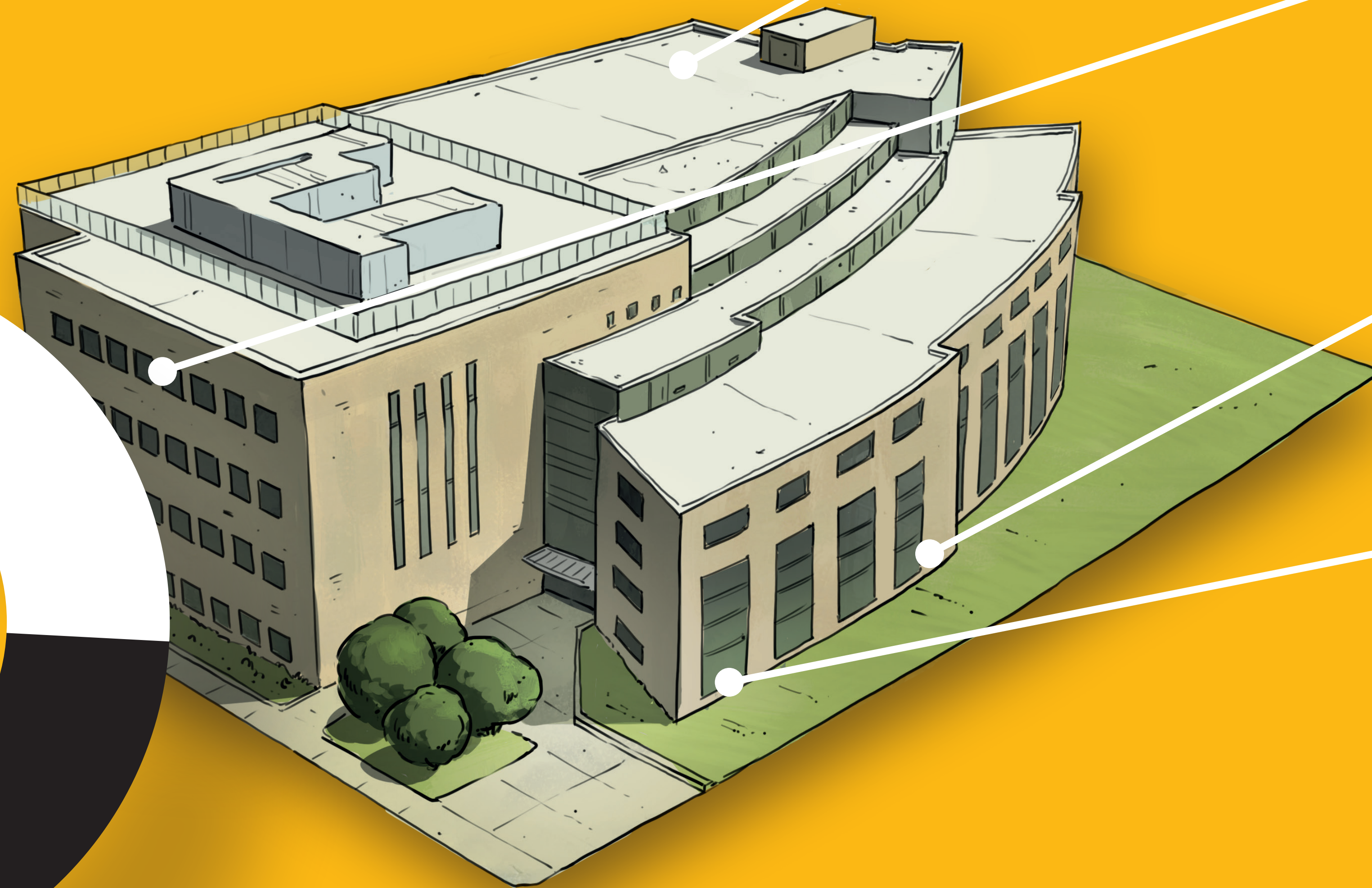


Energy Saving Project

Physics Research Building

This infrastructure upgrade is part of a campus-wide energy saving initiative that will reduce OSU's energy consumption by 25% over the next decade.



Improving centralized controls and energy management



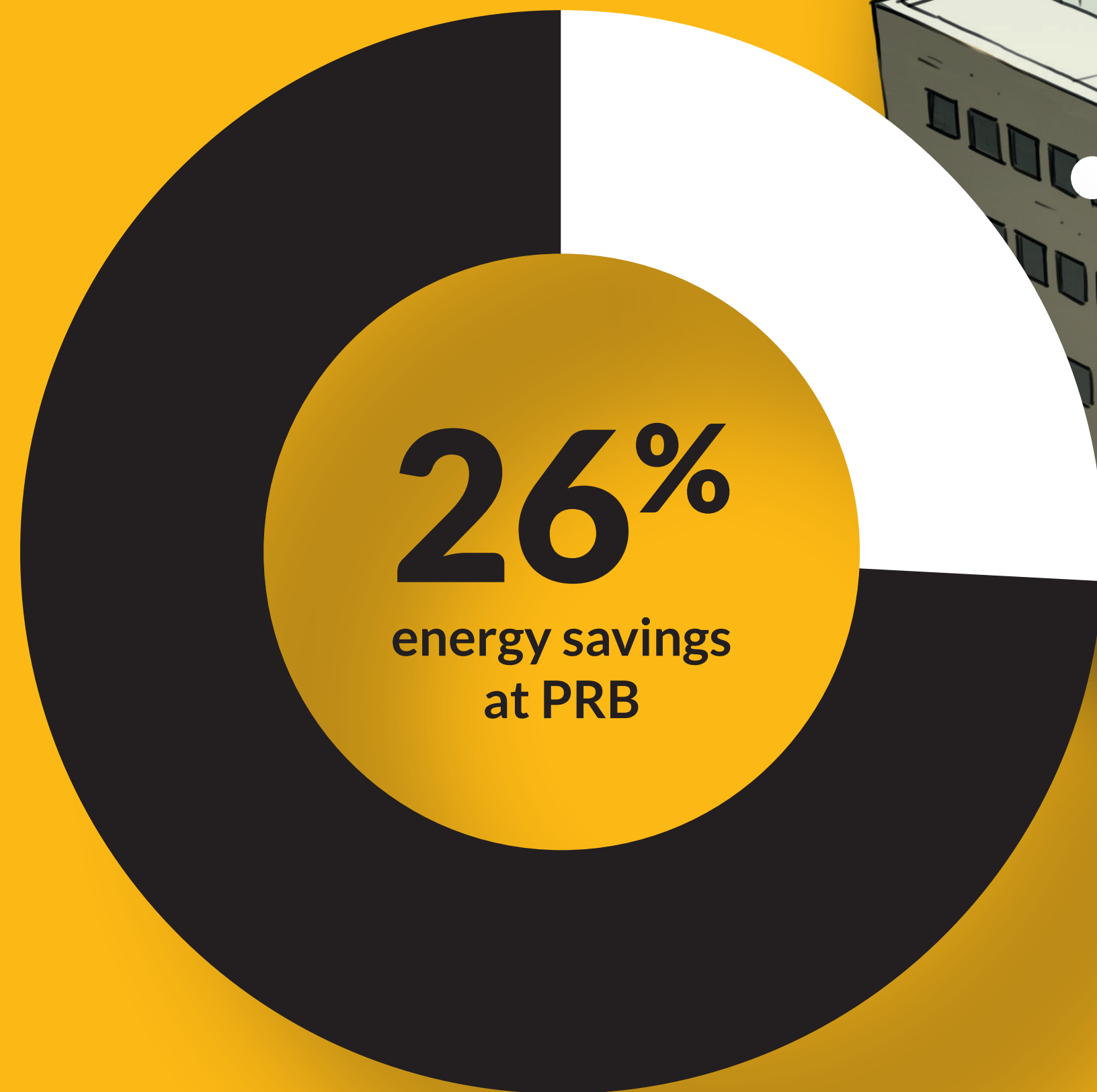
Heating water improvement with more efficient pumping



Recovering heat with heat pumps for efficient heating and cooling



Optimized operation of building cooling



Facilitate Operations

Reduced GHG emissions

Implementation Timeline

