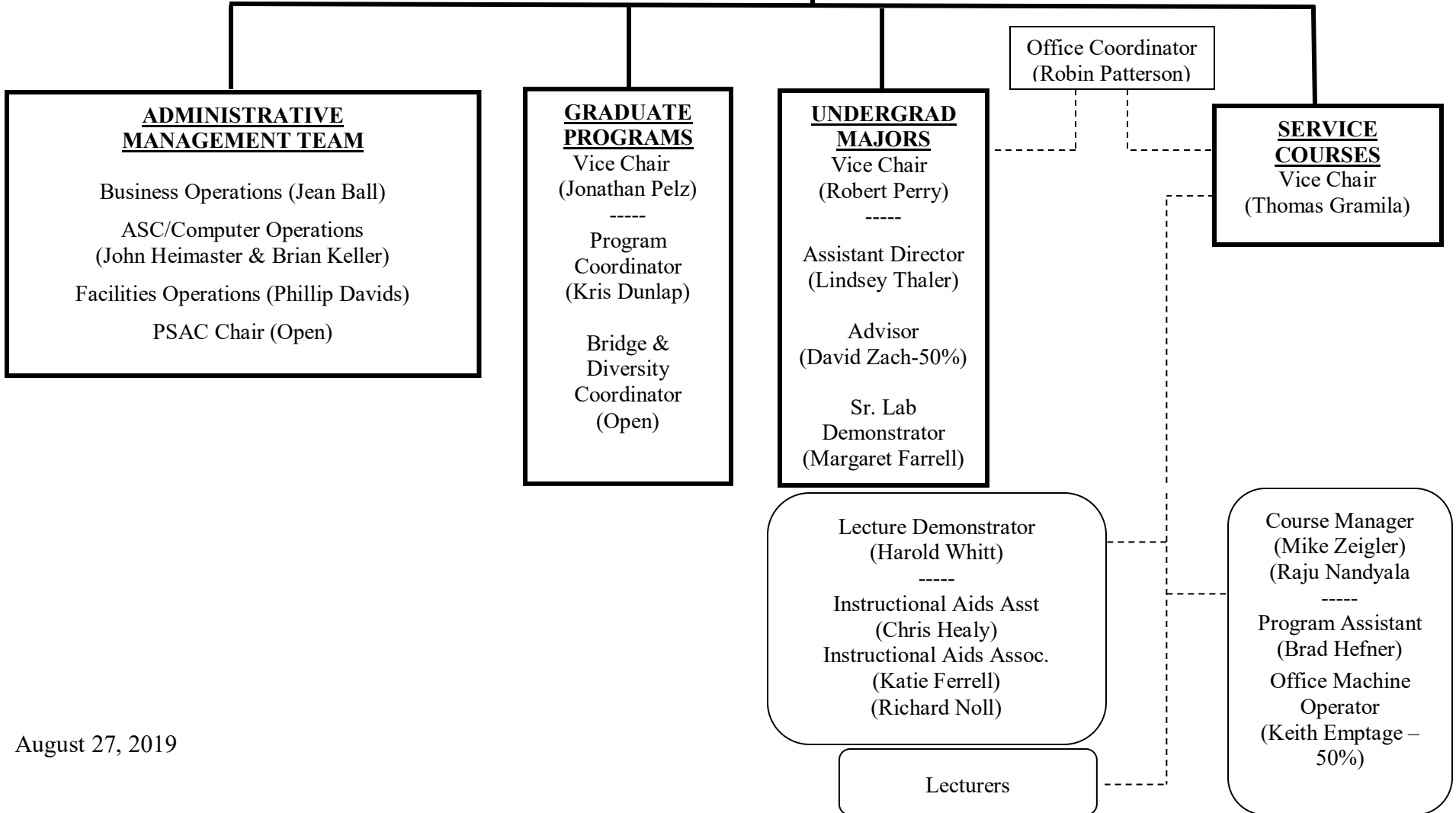




CHAIR
(Brian Winer)

Assistant to the Chair
(Ruth Leonard)





ADMINISTRATIVE MANAGEMENT TEAM
(Direct Reports to Chair)

Assistant to the Chair
Ruth Leonard

ASC COMPUTER & INFORMATION OPERATIONS
Director, Scientific Computing
(John Heimaster)

Systems Manager
(Terry Bradley)
(Bryan Dunlap)
(Andrew Canale)

BUSINESS OPERATIONS
Business Manager
(Jean Ball)

FACILITIES OPERATIONS
Facilities Engineering Manager
(Phil Davids)
(Liaison for ASC Machine Shop)

FACULTY ADMINISTRATIVE SUPPORT
ASC Senior Grants and Contracts Specialist
(Lori Arnold)

Fiscal Officer
(Tanya Ash)

Fiscal Officer 1
(Keith Emptage – 50%)

Office Admin Associate (HR)
(Pamela Hood)

Office Associate
(Jenny Finnell)

Admin Associate 1
(Eric Robbins)
(Lisa Colarosa-25%)

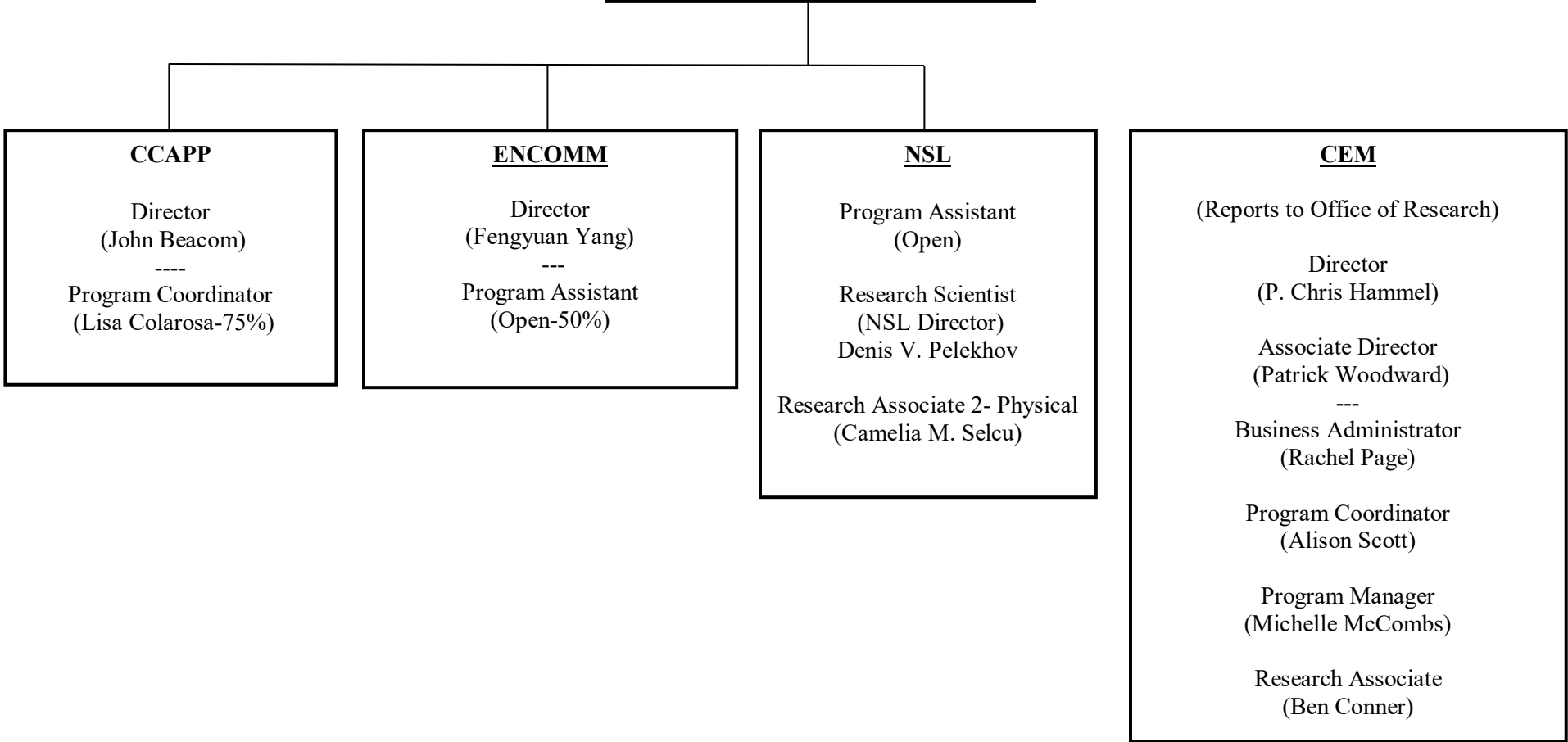
Fiscal Associate
(Open-3 (Kyle, Erin, Ruth-50%))

Building Coordinator
(Mark Reed)

Electromechanical Shop
Supervisor
Sr Design Engineer
(Kent Ludwig)



**CENTERS IN THE
DEPARTMENT OF PHYSICS**
(Report to Chair in consultation with
Dean)





CHAIR
(Brian Winer)

(ex- officio on all committees)

